

Classification	System and Application FAQ on WinCE PAC				No.	2-022-00	
Author	Tunglu-Yu	Version	1.0.0	Date	2013/05/16	Page	1/5

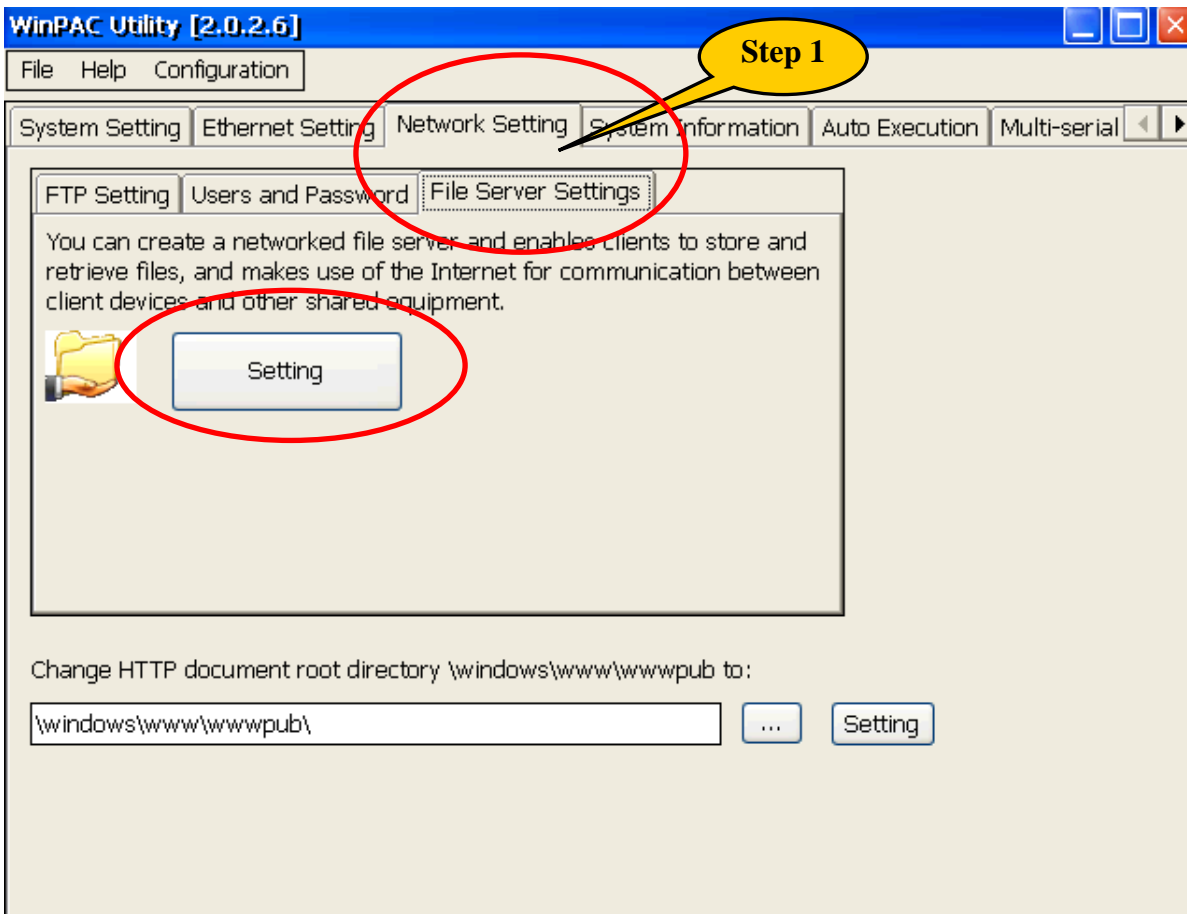
## How to configure the SMB File Server

Applies to:

Platform	OS version	WinPAC/ViewPAC utility version
WP-8x4x	V 1.6.0.1 and later	V2.0.2.5 and later
WP-8x3x	V1.3.0.0 and later	
WP-5000	V1.1.1.0 and later	
VP-25Wx	V2.2.0.0 and later	
VP-23Wx	V2.2.0.0 and later	
VP-413x	V2.4.1.0 and later	

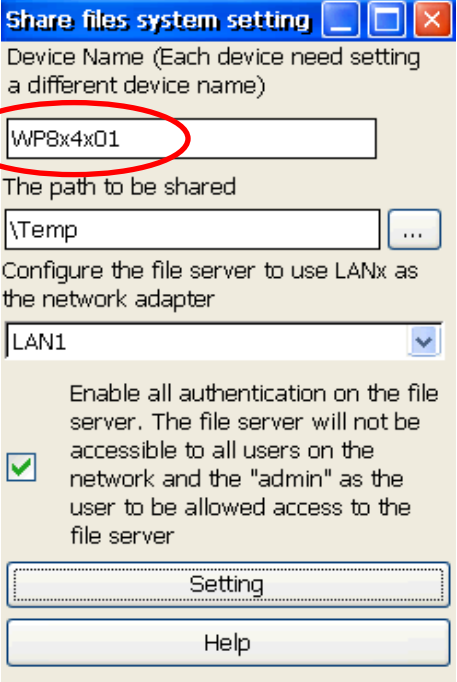
Please use the version 2.0.2.5 and later of the WinPAC Utility (ViewPAC Utility) to configure the SMB File Server and perform the follow steps:

**Step 1:** Execute the WinPAC Utility, click the Setting button on the File Server Settings tab on the Network Setting tab.



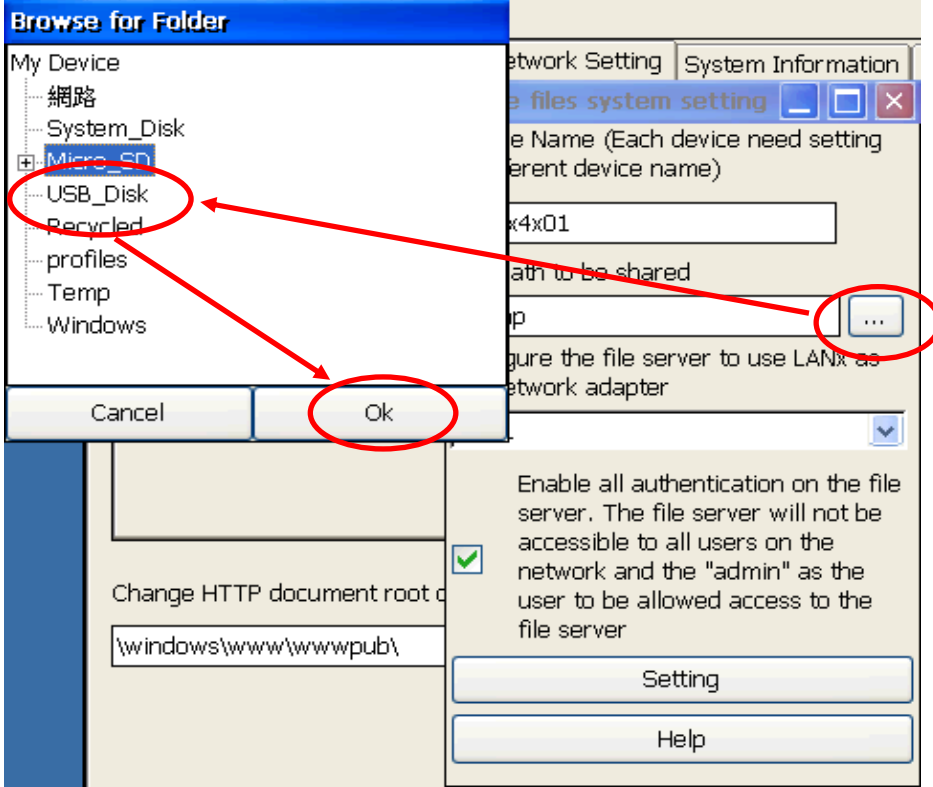
Classification	System and Application FAQ on WinCE PAC				No.	2-022-00	
Author	Tunglu-Yu	Version	1.0.0	Date	2013/05/16	Page	2/5

**Step 2:** Enter the device name, ensure that the name for each device is different.



**Step 3:** Specify the share folder then click OK.

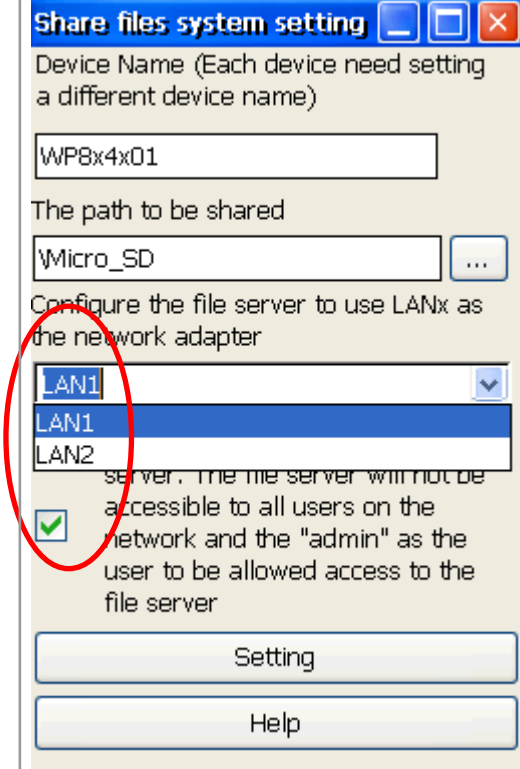
**Note:** The name of the share folder can not contain any reserved characters.



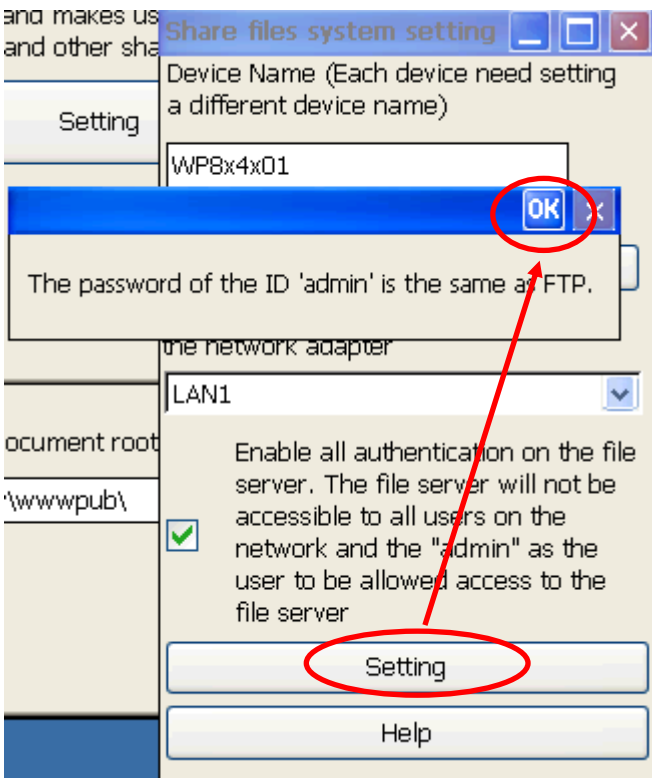
Classification	System and Application FAQ on WinCE PAC				No.	2-022-00	
Author	Tunglu-Yu	Version	1.0.0	Date	2013/05/16	Page	3/5

**Step 5:** Choose the LAN adapter for connecting to the File Server. Uncheck the checkbox will allow all users to connect to the file server.

**Note:** The file server uses the same ID and password with the FTP server.

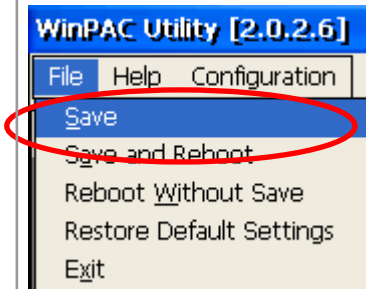


**Step 6:** Click the "Setting" button and then press OK.



Classification	System and Application FAQ on WinCE PAC				No.	2-022-00	
Author	Tunglu-Yu	Version	1.0.0	Date	2013/05/16	Page	4/5

**Step 7:** Select the “File“ -> “Save”.



**Step 8:** On the PC or other device, enter the “IP address“ for the LAN set in step5 or “\\“ + device name set in step 2 (e.g., \\WP8x4x01) in the address bar and press Enter, then enter the ID and password to connect to the file server.

**Note:** If you can not use the “IP address” to connect with the file server, you can use the “\\device name” to connect to the file server.



Classification	System and Application FAQ on WinCE PAC				No.	2-022-00	
Author	Tunglu-Yu	Version	1.0.0	Date	2013/05/16	Page	5/5

## Revision History

Revision	Date	Description
1.0.0	2013/05/16	Initial release